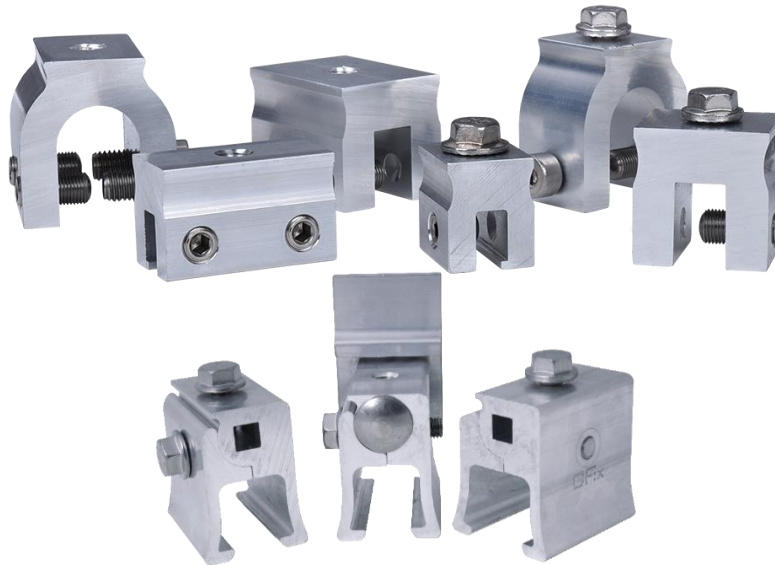


### General Information

With **CF:x clamps**, PV systems, fall protection systems or guardrails can be fastened securely and without penetration on almost all different types of metal seam roofs and on industrial seam systems. In addition, the range includes seam clamps with clamping jaws that ensure secure fastening of various superstructures on different international profiles.

All our clamps are tested on different profiles and achieve high holding forces.



### The benefits of CF:x Clamps

- **Non-penetrative installation on the most common profiles**
- **Approval by DIBt Z-14.4.912**
- **High holding strengths**
- **Quick and easy installation**
- **Extensively tested, load-bearing capacity values on request**





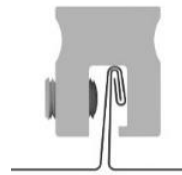
## Type of Clamp

### DS-Clamp

50 mm  
2 grub screws

### DS-Mini

30 mm  
1 grub screw



## Profile

### Double folded standing seam

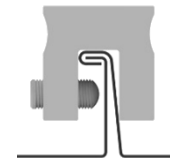
Form-lock achieved by grub screw with rounded nose

General approval by DIBt  
Z-14.4.912



### M-Clamp

50 mm  
2 grub screws

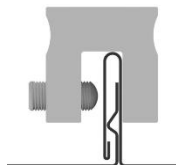


### Single folded seams



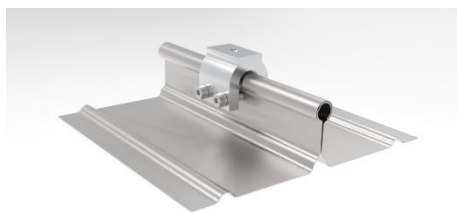
### M-Mini

30 mm  
1 grub screw



### Snap lock profiles

Form-lock achieved by grub screw with rounded nose

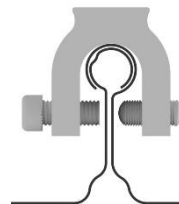


### R-Clamp

50 mm  
2 grub screws

### R-Mini

30 mm  
1 grub screw



### Round seam profiles

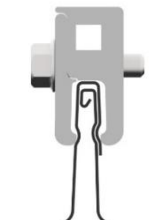
like Bemo. Kalzip

General approval by DIBt  
Z-14.4.912



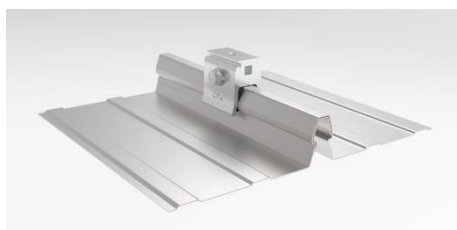
### RD-Clamp

80 mm

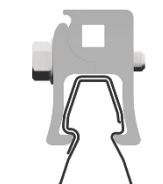


### Roof profiles

Domico GBS,  
RIB-ROOF 465  
2 parts clamps for  
optimized form lock

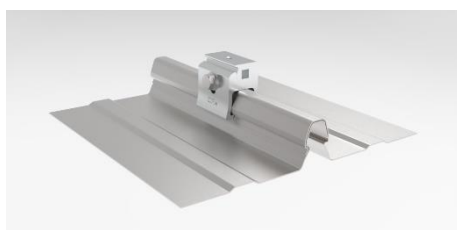


### K15 Clamp



### Roof profiles

Domitec  
Lysaght Klip-Lok 406  
Safintra Saflok 410  
Safintra Saflok 700



### K20-Clamp



### Roof profiles

Fielders KingKlip  
Lysaght Kliplock  
Optima 980  
WeatherClip 655  
WeatherClip 700