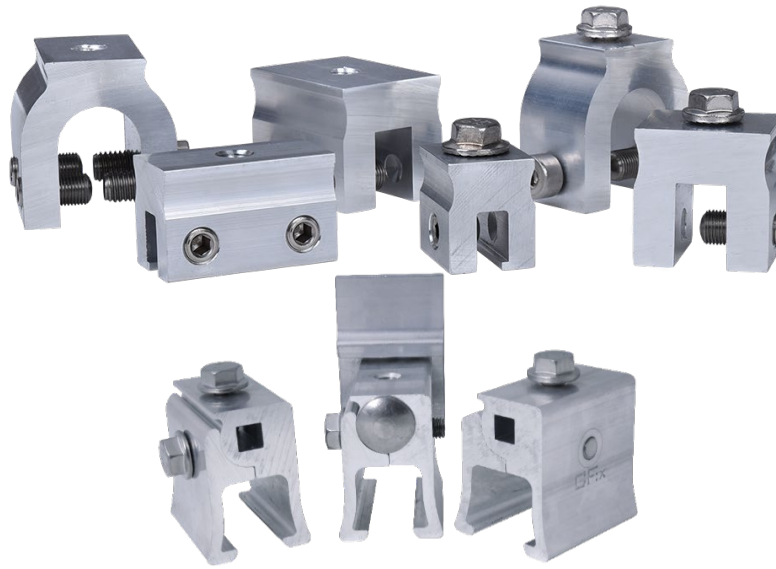


General Information

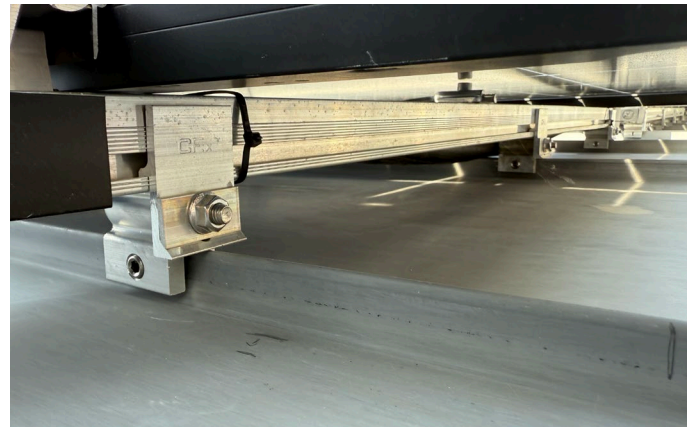
CF:x clamps can be used to securely attach PV systems, fall protection devices and much more to handcrafted sheet metal roofs and almost all industrial standing seam systems without penetrating the roof. The range also includes standing seam clamps with clamping jaws that ensure secure attachment to various structures on different international profiles.

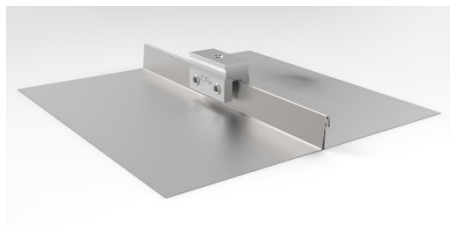
Our clamps have European Technical for many profiles and achieve high holding forces.



The benefits of CF:x Clamps

- **Non-penetrating fastening on almost all types of folds and profiles**
- **High holding forces**
- **General building approval Z-14.4-912**
- **European Technical Approval ETA-25/0540**
- **Easy to assemble**





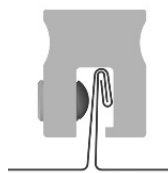
Typ of Clamp

DS-Clamp

50 mm
2 grub screws

DS-Mini

30 mm
1 grub screw



Profile

Double folded standing seam

From lock achieved by grub screw with rounded nose

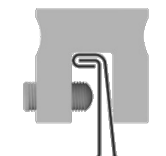
Building authority approval

Z-14.4-912
ETA-25/0540

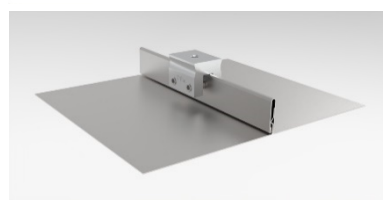


M-Clamp

50 mm
2 grub screws



Single folded seams



M-Mini

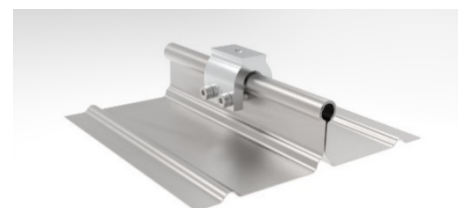
30 mm
1 grub screw



Snap lock profiles

From lock achieved by grub screw with rounded nose

ETA-25/0540

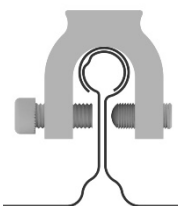


R-Clamp

50 mm
2 grub screws

R-Mini

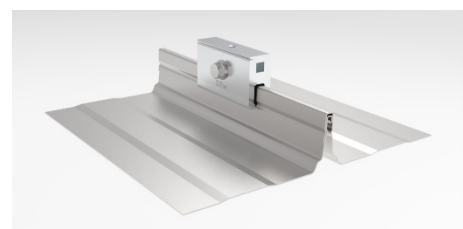
30 mm
1 grub screw



Round seam profiles

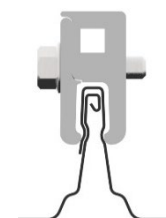
like Bemo, Kalzip

Building authority approval
Z-14.4-912
ETA-25/0540



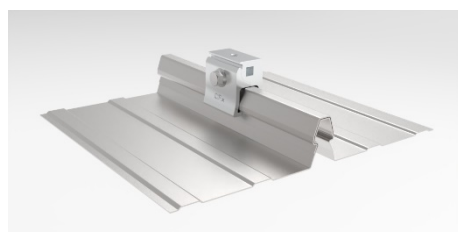
RD-Clamp

80 mm

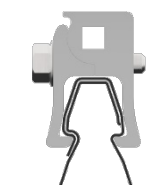


Roof profiles

Domico GBS,
RIB-ROOF 465
2 parts clamps for
optimized from lock
ETA-25/0540

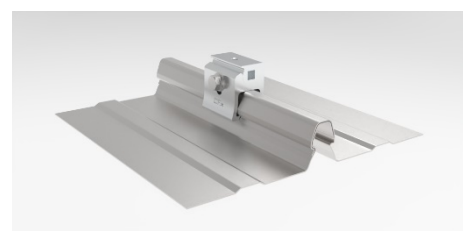


K15 Clamp

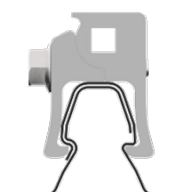


Roof profiles

Domitec
Lysaght Klip-Lok 406
Safintra Saflok 410
Safintra Saflok 700
ETA-25/0540



K20-Clamp



Roof profiles

Fielders KingKlip
Lysaght Kliplock
Optima 980
WeatherClip 655
WeatherClip 700