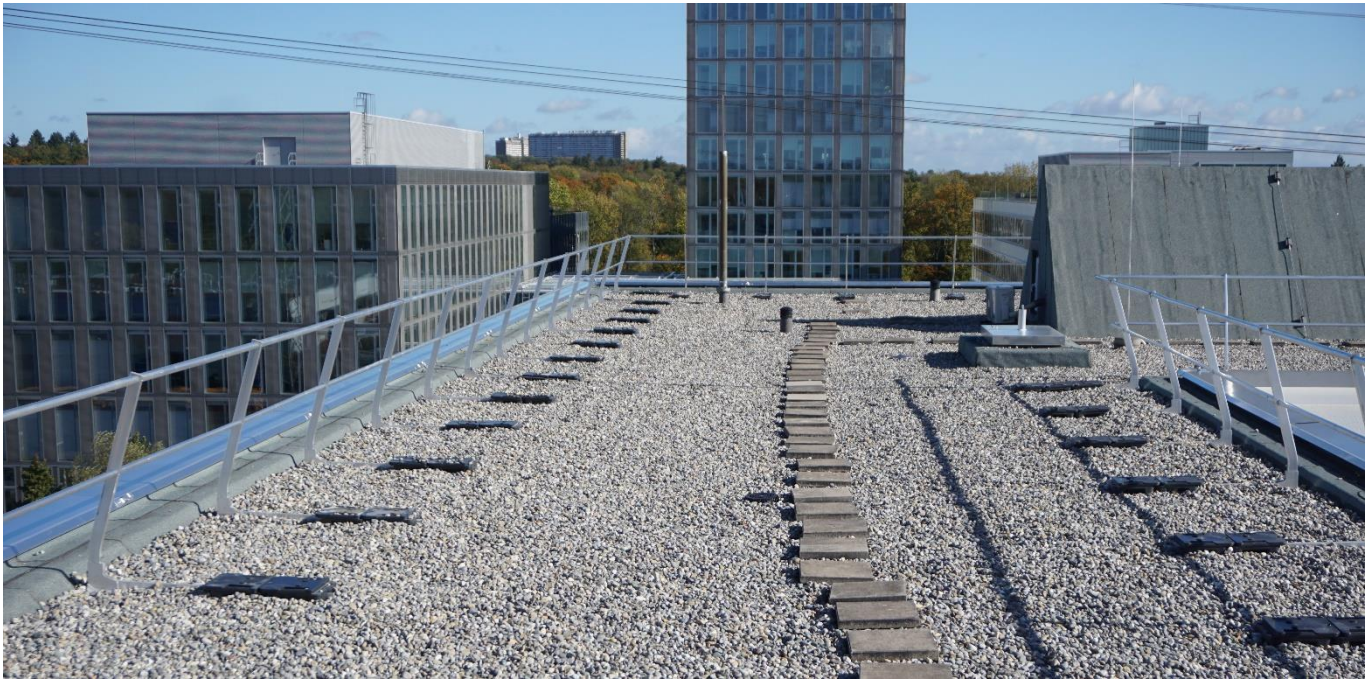


System description

GARDCO AL is a non-penetrating, load-bearing aluminium guardrail system for the side protection of flat roofs that are not accessible to the public.

This means that anyone who needs to carry out maintenance or installation work on the roof is protected at all times. The expensive annual inspection required for individual anchor points is no longer necessary.

The guardrails are tested in accordance with DIN EN 13374 Class A (maximum post spacing 2.5 m) and DIN EN ISO 14122-3 (maximum post spacing 1.5 m).

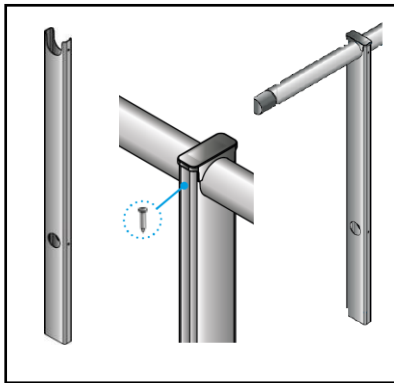


Quick and easy assembly:

- Supports with semi-circular recess for easy insertion of the handrail
- Tapered tubes on one side for interlocking
- 2 individual weights of 12,5 kg each with carrying handle
- Pre-assembly outrigger welded to base section



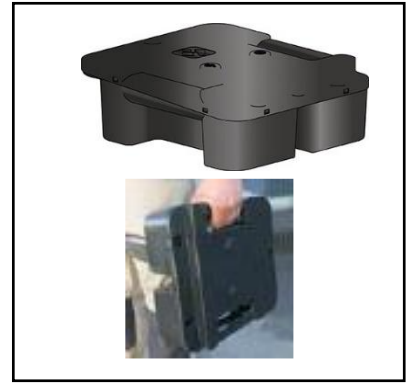
Components:



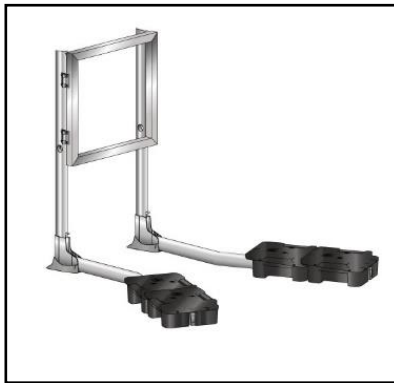
Support in height 1,10 m or 1,18 m in XLversion for garvel Or green roofs.



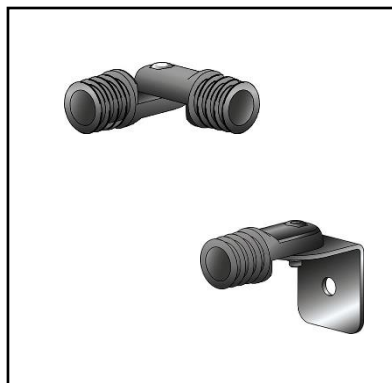
Pre-assembled outrigger, fixation And height adjustment with blocking wedge.



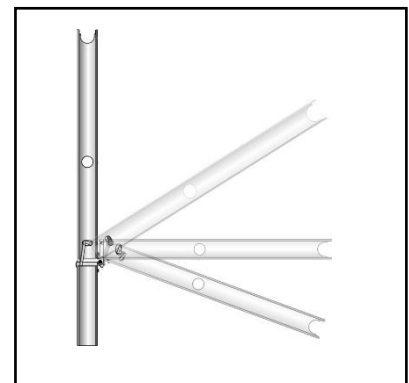
Plastic weight with concrete filling 12,5 kg with carrying handle.



Safety door self- closing



Flexible corner connector and wall connection



Foldable support on request, see separate data sheet.

Please note:

Before installation, the load-bearing capacity of the roof structure and therefore its suitability for load-bearing collective protection must be checked. The maximum load on the roof surface for the GARDCO AL system is 8-10 KPa.

For roofs with a parapet less than 15 cm high, a skirting board is mandatory. This may be mounted a maximum of 20 mm above the accessible level.

The guardrails are designed for a roof pitch of up to 10°. For roofs without a parapet, a shear protection must be provided.

The railing must not be supplemented with attachments or cladding that increase the area exposed to wind or represent an additional load. In areas with aggressive environmental conditions, e.g. in chemical plants or near the coast, additional coating or anodising of the railing parts may be necessary.

We would be happy to advise you on this and look forward to hearing from you.