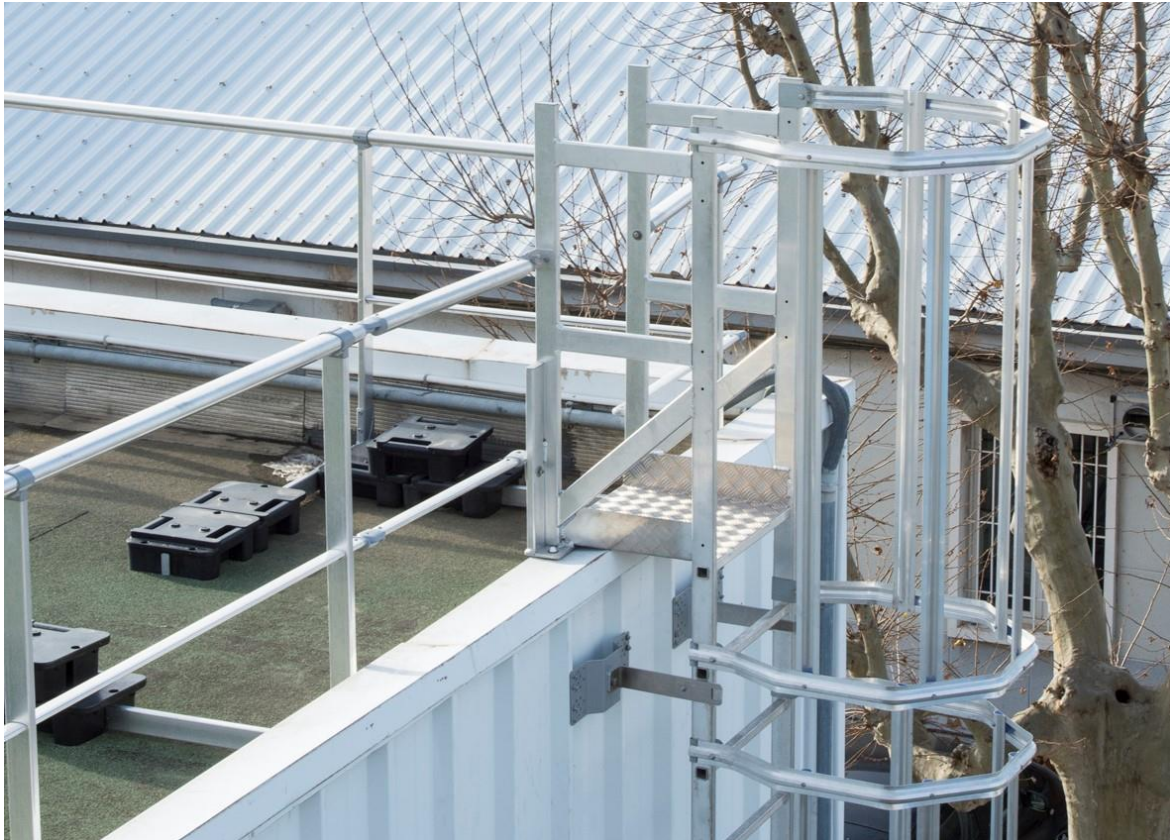


System description

ROOFCLIMB are stationary aluminium climbing ladders that enable authorised persons to safely access roof areas or technical equipment requiring maintenance. With a standard width of 600 mm (750 mm back protection), the ladders are easy to climb.

ROOFCLIMB climbing ladders fulfil the requirements of standard 14122-4 and can be perfectly integrated into the GARDCO collective protection system using suitable connecting elements.



With the modular system of individual elements, you are equipped for all special requirements.

Please note the following specifications:

1. Back protection cage
2. Single or multi-pull vertical ladder
3. Spacing of the wall attachments
4. Protection against unauthorised access

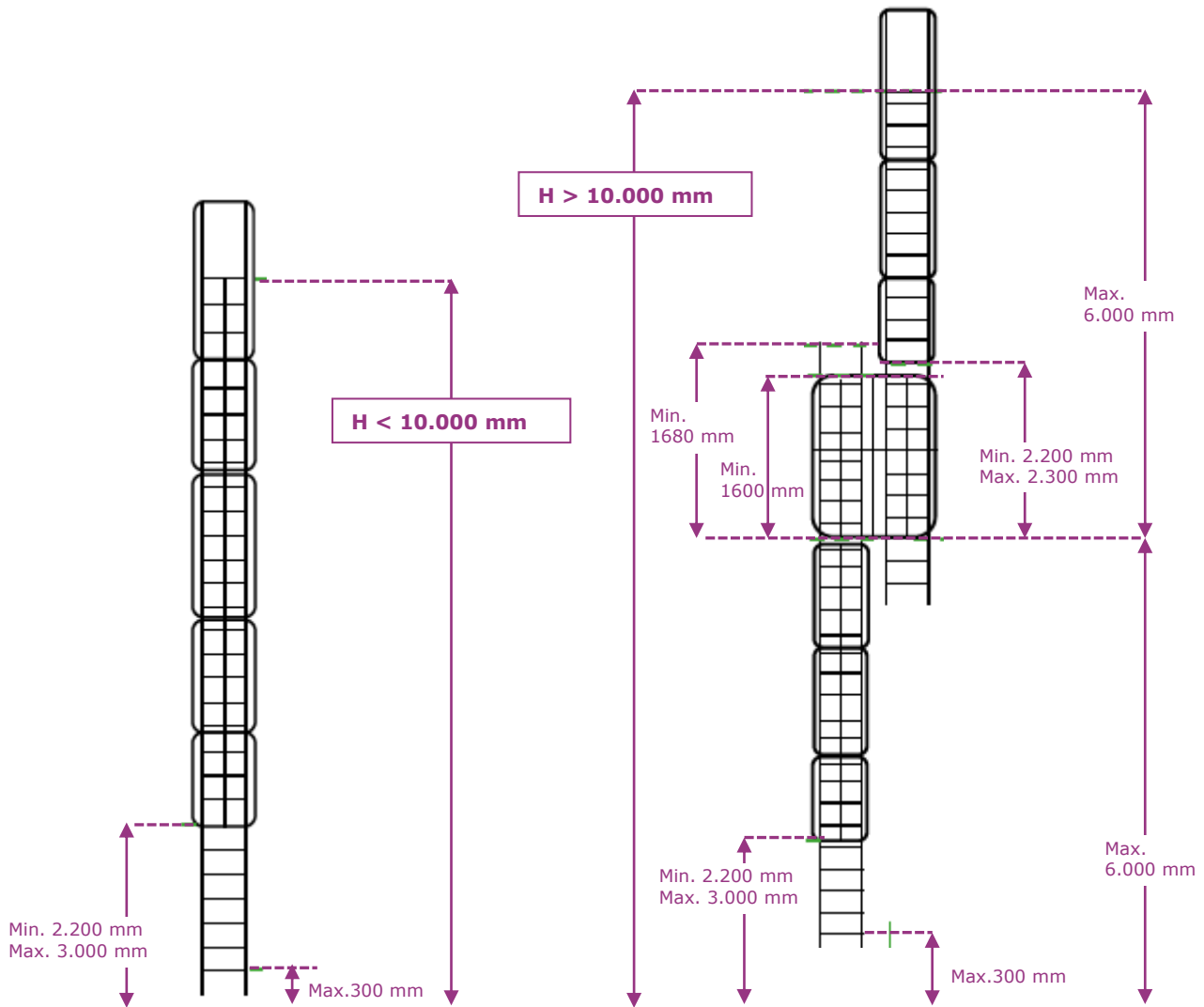
Technical specifications:

Single ladders with back protection:

Max. building height 10,0 m
Safety cage for ladders > 3,0 m in length

Multi-stage ladders with back protection:

From building height of 10,0 m, provide a transfer platform



Back protection:

From a fall height of 3,0 m, back protection must be planned.

The lower back guard should start at a height of 2,2 to 3,0 m.

The upper end of the safety cage must reach up to the handrail of the guardrail at the top of the ladder.

The distance between 2 safety cages must not exceed 0,3 m.

Transfer podest:

A transfer platform must be provided from a fall height of 10,0 m.

The safety cage of the upper ladder should start 2,2 to 2,3 m above the platform.

The lower ladder must reach at least 1,68 m above the level of the platform, the back guard at least 1,6 m.

Access:

The bottom rung of the ladder must not be higher than 0,3 m.

The ladder must be secured against unauthorised access!

Ladder exit:

The top rung of the ladder should be designed as a step to bridge the distance to the wall. The top rung/step should be at the level of the exit platform.

Fall protection in the form of a handrail must be provided at the exit. The ladder should be connected to the guardrail without any gaps.

If the roof to be accessed is not secured by a collective guardrail, a guardrail of at least 2 m must be installed on both sides of the ladder to ensure the necessary distance from the danger zone.

Planning & assembly

When planning, please note the dimensions according to the drawing on the previous page. The fixing brackets must be selected so that the ladder has a minimum distance of 200 mm from the wall.

Fasteners for fixing to the wall must be designed for a vertical load of 1,5 kN per fastener.

For assembly, please follow the instructions in our special instructions for assembly and use. Installation may only be carried out by qualified specialist personnel.

Storage of the parts:

The individual parts are delivered tightly packed so that the components have surface contact with each other. Despite good packaging, this can lead to oxidation on the surfaces in the event of rain or moisture ingress. This does not constitute a material defect, but does affect the appearance. To avoid this, we recommend unpacking the parts and laying them out individually or storing them in a protected, dry place until assembly.

Use and maintenance:

The ladder may only be accessed by authorised persons who are in good health. The consumption of alcohol, drugs or medication can affect the safety of the person on the ladder.

Before accessing the ladder, it should be visually inspected for any damage.

ROOFCLIMB climbing ladders are not subject to any maintenance obligation. However, an annual visual inspection by specialised personnel should be carried out in any case. If parts are damaged, the ladder must be locked immediately and the parts replaced.